

BenchMark

Control Valve Diagnostics™



Link MGR

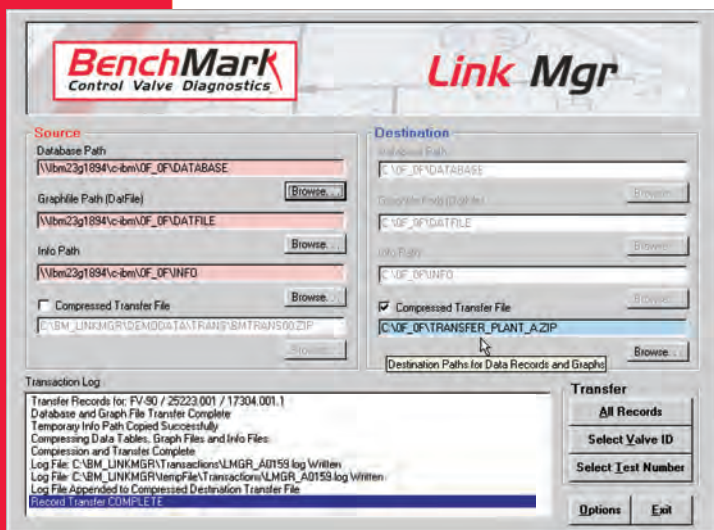
"I'm not a database expert, so I would like to push one button and combine valve diagnostic data from several repair vendors, our new valve supplier and several of our other plants."

Ok. Maybe its not just one button, but we've made it almost that easy to share your **BenchMark Control Valve Diagnostics** data between multiple on-site test systems, multiple valve repair vendors, affiliated plants and new valve manufacturers. And for good measure, we've included powerful tools to help you manage your valve diagnostic data archive.

During maintenance outages, production facility personnel can use **Link MGR** to efficiently transfer comprehensive valve information to and from the valve service vendor(s) awarded the current repair contract(s). Copies of **BenchMark** databases, complete with valve configuration data, test histories, customized terminology and tag specific performance standards, are easily exchanged as single transfer files attached to e-mails or downloaded from web-sites. When the received transfer files are placed on the vendor's **BenchMark** systems, testing can begin without further clerical work or data entry. The quality and efficiency of the overall valve repair process is improved by timely exchanges of detailed information about the valves tested, repaired and overhauled.

Upon project completion, the repair vendor creates a similar **BenchMark** transfer file and e-mails it to the plant. Alternately, the vendor may post the transfer file on a secured portion of their web-site for plant personnel to download at their convenience.

After a review of the downloaded records, **Link MGR** uploads only the updated valve records to the plant's archive drive. **BenchMark Data MGR** then provides desktop access to trending, overlay, reporting and other valve record management tools to various engineering, maintenance, and reliability personnel throughout the plant.



Easily Manage:

Plant - Vendor Data Exchange

Upload/Update/Consolidate Records

Valve Diagnostic Data Archive

Multiple Test Systems

Multiple Data Storage Locations

Record Extraction by Valve ID

Record Extraction by Test Info

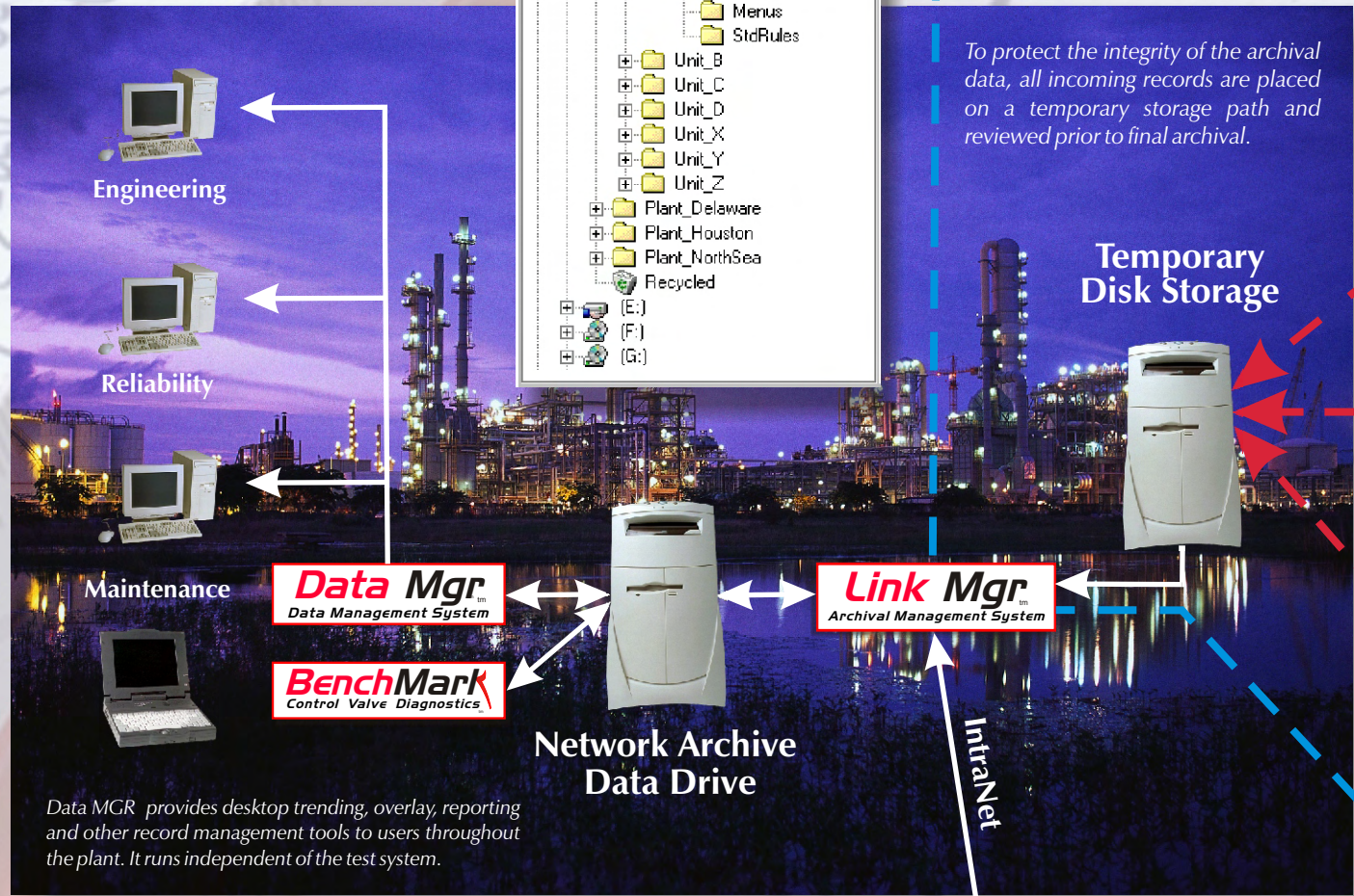
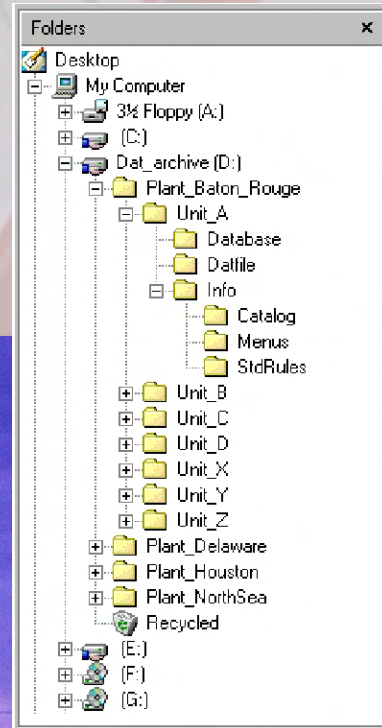
New Valve Records



Information Flow Chart

Data becomes information only when it is available in a useful form.

The BenchMark system provides all of the software tools needed to acquire and efficiently communicate valve performance information within the plant, between affiliates and to and from multiple repair vendors and valve manufacturers.



BenchMark Link MGR provides all of the data extraction, uploading and compression tools needed to efficiently transfer **complete** packages of valve information between plant and vendor with no clerical work and a minimum of difficulty. No database expertise or special training is required.

Records are only created once. Subsequent record sharing, testing and data trending are all accomplished digitally. The plant's valve nomenclature and performance standards established for each valve are maintained throughout the valve repair process.



Valve configuration, test histories, performance standards and nomenclature are all transferred as a single compressed file. The method of transfer is totally at the discretion of the plant.

By e-mail

To protect the integrity of the archival data, all incoming records are placed on a temporary storage path and reviewed prior to final archival.

By e-mail

Download

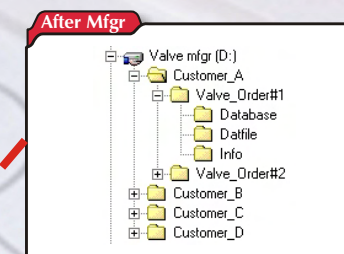
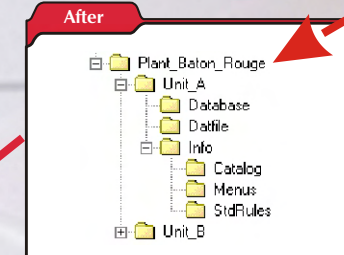
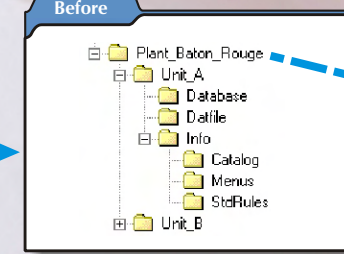
Web site

Download

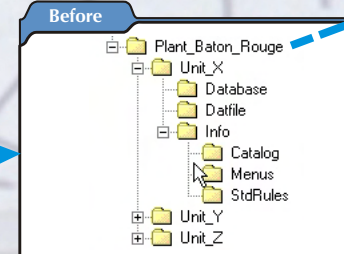
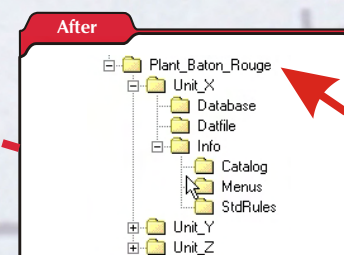
Web site

By e-mail

Compressed Windows Paths for Units "A" and "B"



Records are extracted from the manufacturer's large database and placed into a single compressed file for transfer.



Compressed Windows Paths for Units "X", "Y" and "Z"



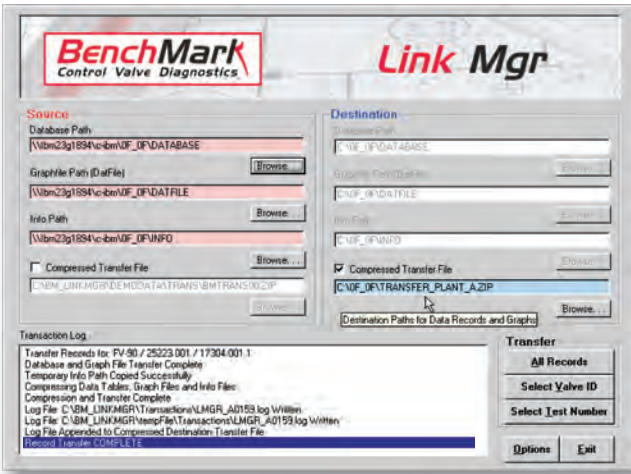
Vendor "A" receives valve data and test histories for Unit "A" and Unit "B" attached to an e-mail from the plant. Once the compressed path is placed on the BenchMark system, testing can begin immediately with no clerical work. Upon completion, the same path, now containing the updated histories, is compressed and returned to the plant.



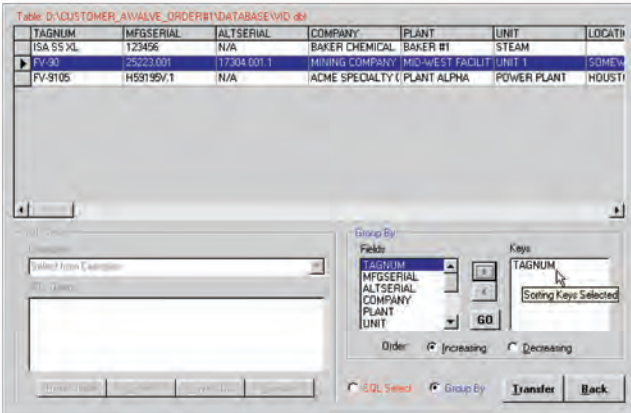
This valve manufacturer uses BenchMark to document the quality of the new valves ordered by the plant. Configuration and post assembly test data are extracted from the manufacturer's database by BenchMark Link MGR, compressed to a single file and placed on the manufacturer's web site to be uploaded at the plant's convenience.



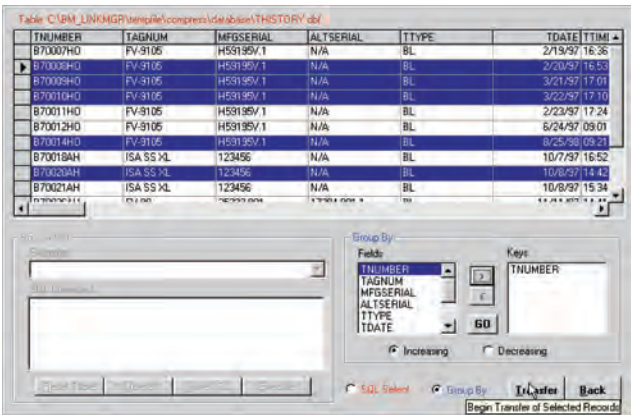
Vendor "B" receives valve data and test histories for Units "X", "Y" and "Z" by a single e-mail from the plant. Link MGR is used to manage the plant's data within this vendor's larger database and among multiple BenchMark systems. On completion of the repair contract, Link MGR is used to prepare the transfer file returned to the plant.



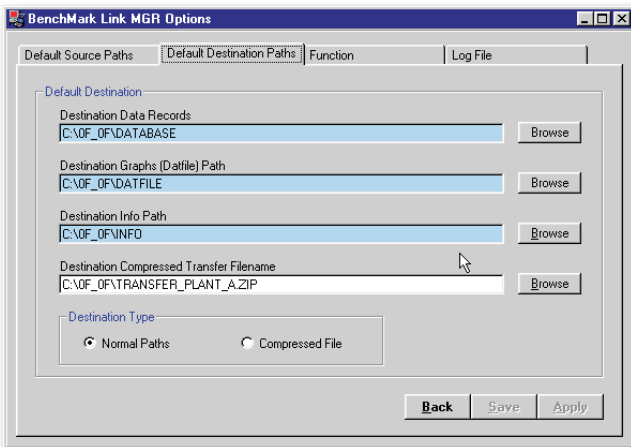
Intuitive Interface Defines Source and Destination for the Transfer



All records for selected valves are transferred by simple command.



Records can be transferred by selecting the desired tests.



Application is easy to configure and use.



Link MGR

BenchMark Link MGR provides a comprehensive set of straight-forward, intuitive tools for the management and archiving of **BenchMark** test data. With this application, you can quickly and easily update or consolidate test records from multiple **BenchMark** test systems, several repair vendors or from various network storage locations. It is a simple matter to transfer: all of the records for a particular plant, unit or customer; all records for selected valves; or just a few specific tests. Database management is complete and automatic. For convenience, data files can be transferred directly to a compressed format for transmittal via the internet or e-mail.

A single **BenchMark Link MGR** command automatically uploads and appends all of the new tests from a **BenchMark** test system to your network archive storage location. It doesn't get any easier than that!

Detailed transaction logs are created, stored locally and placed in the destination path or appended to the compressed transfer file. All database operations are automatically processed; no operator intervention or database training is required.

The application is easily configured to allow operation by personnel with a wide range of computer skills.

System Requirements

- Windows XP or Windows 7
- 500 MB RAM Minimum
- 2 MB Available Hard Disk Space

For More Information

info@blkdmdeng.com
www.blkdmdeng.com



14884 S. Heritagecrest Way
 Suite B
 Bluffdale, Utah USA 84065

(801) 256 - 0202 phone
 (801) 256 - 0217 fax

Copyright 2001 - 2014 Black Diamond Engineering, All Rights Reserved

BenchMark Control Valve Diagnostics and Black Diamond Engineering are trademarks of Black Diamond Engineering, Inc. Bluffdale, Utah USA. All rights are reserved. All other trademarks and tradenames shown are the property of their respective owners.

Black Diamond Engineering reserves the right to change or modify specifications without notice.